



**Water Monitoring Result at M5B - Central Cooling Water Intake Group  
Mid-Flood Tide**

Date	Time	Weather Condition	Sampling Depth m	Water Temperature °C			pH			Salinity ppt			DO Saturation %			DO mg/L			Turbidity NTU			Suspended Solids mg/L		
				Value	Average		Value	Average		Value	Average		Value	Average		Value	Average		Value	Average		Value	Average	
3/5/16	16:00	Fine	Middle	3.5	24.00	24.00	24.05	8.52	8.52	8.53	31.06	31.06	31.08	75.6	75.6	75.7	5.33	5.33	5.33	8.54	8.56	8.53	8	8.50
	16:02		Middle	3.5	24.10	24.10		8.53	8.53		31.09	31.09		75.4	76.0		5.31	5.35		8.54	8.48		9	
5/5/16	16:10	Fine	Middle	3.5	24.70	24.70	24.50	8.51	8.51	8.52	30.09	30.09	30.09	74.9	74.6	74.2	5.24	5.22	5.19	12.11	12.10	12.08	8	7.50
	16:12		Middle	3.5	24.30	24.30		8.52	8.52		30.09	30.09		74.0	73.2		5.18	5.12		12.07	12.02		7	
7/5/16	19:10	Cloudy	Middle	3.0	26.50	26.50	26.60	8.47	8.47	8.48	29.89	29.89	29.89	74.5	78.3	76.3	5.04	5.30	5.16	6.84	6.82	6.90	6	5.00
	19:11		Middle	3.0	26.70	26.70		8.48	8.48		29.89	29.89		77.2	75.3		5.22	5.09		6.96	6.99		4	
9/5/16	7:55	Fine	Middle	4.0	24.90	24.90	24.95	8.46	8.46	8.48	30.40	30.40	30.39	74.1	75.2	74.4	5.15	5.23	5.17	11.43	11.54	11.55	5	6.00
	7:57		Middle	4.0	25.00	25.00		8.49	8.49		30.38	30.38		74.5	73.6		5.18	5.12		11.61	11.60		7	
11/5/16	8:34	Fine	Middle	3.5	23.90	23.90	23.90	8.38	8.38	8.40	29.91	29.91	29.91	61.6	60.7	60.2	4.37	4.31	4.27	4.67	4.80	4.78	6	6.50
	8:36		Middle	3.5	23.90	23.90		8.41	8.41		29.91	29.91		59.5	58.8		4.23	4.18		4.82	4.83		7	
13/5/16	10:27	Fine	Middle	3.5	24.50	24.50	24.40	8.38	8.38	8.41	30.91	30.91	30.95	69.1	67.1	67.0	4.85	4.71	4.72	5.13	5.22	5.17	8	9.00
	10:29		Middle	3.5	24.30	24.30		8.43	8.43		30.99	30.99		65.8	65.9		4.62	4.68		5.13	5.19		10	
21/5/16	19:30	Cloudy	Middle	4.5	25.70	25.70	25.75	8.51	8.51	8.53	31.41	31.41	31.41	75.6	75.9	75.0	5.16	5.18	5.12	7.13	6.99	6.94	10	9.00
	19:31		Middle	4.5	25.80	25.80		8.54	8.54		31.40	31.40		74.3	74.1		5.07	5.05		6.82	6.80		8	
23/5/16	20:00	Cloudy	Middle	3.5	26.20	26.20	26.25	8.53	8.53	8.54	31.04	31.04	31.04	76.1	76.7	76.1	5.16	5.20	5.16	10.25	10.22	10.29	6	5.50
	20:01		Middle	3.5	26.30	26.30		8.55	8.55		31.04	31.04		75.8	75.6		5.14	5.12		10.33	10.35		5	
25/5/16	20:30	Fine	Middle	3.5	26.70	26.70	26.75	8.45	8.45	8.46	30.22	30.22	30.22	73.0	72.5	72.7	4.87	4.90	4.89	5.78	5.76	5.81	5	4.50
	20:31		Middle	3.5	26.80	26.80		8.47	8.47		30.21	30.21		73.0	72.2		4.90	4.87		5.79	5.92		4	
27/5/16	23:46	Cloudy	Middle	3.0	26.60	26.60	26.60	8.41	8.41	8.43	31.36	31.36	31.37	77.2	78.9	77.9	4.88	4.99	4.93	10.29	10.50	10.32	8	8.00
	23:47		Middle	3.0	26.60	26.60		8.44	8.44		31.37	31.37		78.0	77.4		4.94	4.90		10.26	10.24		8	
30/5/16	10:40	Fine	Middle	3.5	28.20	28.20	28.40	8.45	8.45	8.48	28.57	28.57	28.58	68.2	70.1	67.8	4.53	4.56	4.48	5.47	5.39	5.29	5	5.00
	10:42		Middle	3.5	28.60	28.60		8.51	8.51		28.58	28.58		67.7	65.0		4.50	4.31		5.22	5.09		5	

Remarks:

Single underline denotes exceedance over Action Level.

Double underline denotes exceedance over Limit Level.

Due to suspension of works under Contractor no. HK/2012/08, the water quality monitoring event on 17 May 2016 and 19 May 2016 were temporary suspended.



**Water Monitoring Result at Culvert J - Reference Station  
Mid-Flood Tide**

Date	Time	Weather Condition	Sampling Depth		Water Temperature			pH			Salinity			DO Saturation		DO		Turbidity		Suspended Solids				
					°C		-		ppt		%		mg/L		NTU		mg/L							
			m	Value	Average	Value	Average	Value	Average	Value	Average	Value	Average	Value	Average	Value	Average	Value	Average					
3/5/16	15:50	Fine	Middle	3.5	24.20	24.20	24.30	8.42	8.42	8.46	30.83	30.83	30.83	68.6	70.3	69.9	4.82	4.94	4.91	10.35	10.27	10.19	8	7.50
	15:55		Middle	3.5	24.40	24.40		8.50	8.50		30.83	30.83		70.2	70.3		4.93	4.94		10.07	10.07		7	
5/5/16	16:05	Fine	Middle	3.5	25.00	25.00	25.05	8.49	8.49	8.50	29.80	29.80	29.80	70.1	69.6	70.0	4.89	4.87	4.89	12.78	12.78	12.78	9	8.00
	16:07		Middle	3.5	25.10	25.10		8.50	8.50		29.80	29.80		70.5	69.6		4.91	4.87		12.78	12.78		7	
7/5/16	19:00	Cloudy	Middle	2.5	26.60	26.60	26.65	8.46	8.46	8.46	28.30	28.30	28.31	69.9	70.1	68.8	4.79	4.79	4.71	8.55	8.57	8.56	5	6.00
	19:01		Middle	2.5	26.70	26.70		8.45	8.45		28.31	28.31		67.6	67.6		4.62	4.62		8.35	8.78		7	
9/5/16	7:50	Fine	Middle	3.5	25.30	25.30	25.40	8.41	8.41	8.43	29.10	29.10	29.10	71.9	72.0	71.3	5.00	5.00	4.95	12.57	12.57	12.62	6	6.50
	7:52		Middle	3.5	25.50	25.50		8.44	8.44		29.10	29.10		71.0	70.2		4.93	4.87		12.66	12.68		7	
11/5/16	8:30	Fine	Middle	3.5	24.10	24.10	24.15	8.34	8.34	8.36	27.67	27.67	27.67	59.1	58.6	57.0	4.24	4.20	4.27	2.37	2.43	2.40	7	7.00
	8:32		Middle	3.5	24.20	24.20		8.37	8.37		27.67	27.67		59.6	50.8		4.27	4.36		2.37	2.41		7	
13/5/16	10:23	Fine	Middle	3.5	24.50	24.50	24.50	8.39	8.39	8.40	27.98	27.98	27.97	58.4	58.4	58.6	4.15	4.15	4.17	6.99	6.98	6.97	7	8.00
	10:25		Middle	3.5	24.50	24.50		8.40	8.40		27.95	27.95		58.9	58.7		4.19	4.17		6.95	6.96		9	
21/5/16	19:40	Cloudy	Middle	2.5	25.70	25.70	25.70	8.66	8.66	8.65	24.35	24.35	24.36	67.1	66.6	66.8	4.77	4.78	4.76	5.63	5.51	5.64	10	9.50
	19:41		Middle	2.5	25.70	25.70		8.63	8.63		24.36	24.36		66.4	66.9		4.72	4.76		5.77	5.66		9	
23/5/16	20:10	Cloudy	Middle	3.0	25.90	25.90	25.95	8.59	8.59	8.57	26.12	26.12	26.12	58.2	59.1	59.0	4.09	4.16	4.15	12.19	12.16	12.07	7	7.00
	20:11		Middle	3.0	26.00	26.00		8.54	8.54		26.12	26.12		59.5	59.3		4.18	4.15		12.04	11.87		7	
25/5/16	20:40	Fine	Middle	3.0	26.50	26.50	26.55	8.51	8.51	8.51	29.06	29.05	29.06	68.1	68.8	68.4	4.64	4.69	4.66	9.97	10.14	9.89	5	5.00
	20:41		Middle	3.0	26.60	26.60		8.51	8.51		29.06	29.06		68.6	67.9		4.67	4.62		9.94	9.51		5	
27/5/16	23:54	Cloudy	Middle	2.5	27.30	27.30	27.30	8.39	8.39	8.37	27.73	27.73	27.73	41.7	42.1	41.6	2.66	2.69	2.66	11.02	10.43	10.77	10	10.00
	23:55		Middle	2.5	27.30	27.30		8.34	8.34		27.73	27.73		41.6	40.9		2.66	2.62		10.94	10.69		10	
30/5/16	10:36	Fine	Middle	3.5	28.80	28.80	28.85	8.37	8.37	8.40	28.38	28.38	28.38	58.2	58.2	58.4	3.83	3.83	3.85	4.40	4.33	4.34	4	3.50
	10:38		Middle	3.5	28.90	28.90		8.42	8.42		28.38	28.38		58.5	58.8		3.85	3.87		4.32	4.32		3	

Remarks:

Due to suspension of works under Contractor no. HK/2012/08, the water quality monitoring event on 17 May 2016 and 19 May 2016 were temporary suspended.



**Water Monitoring Result at M5B - Central Colling Water Intake Group  
Mid-Ebb Tide**

Date	Time	Weather Condition	Sampling Depth		Water Temperature			pH			Salinity			DO Saturation			DO			Turbidity			Suspended Solids	
			m		°C		-		ppt		%		mg/L		NTU		mg/L							
					Value	Average	Value	Average	Value	Average	Value	Average	Value	Average	Value	Average	Value	Average						
3/5/16	9:57	Fine	Middle	3.5	24.30	24.30	24.30	8.41	8.41	8.44	31.12	31.12	31.12	66.5	67.6	66.1	4.67	4.74	4.64	9.41	9.47	9.38	6	6.00
	9:59		Middle	3.5	24.30	24.30		8.47	8.47		31.12	31.12		65.8	64.6		4.61	4.53		9.32	9.32		6	
5/5/16	12:20	Fine	Middle	3.0	25.20	25.20	25.30	8.38	8.38	8.40	30.42	30.42	30.41	79.0	78.7	78.8	5.46	5.44	5.44	10.55	10.64	10.66	4	3.50
	12:22		Middle	3.0	25.40	25.40		8.42	8.42		30.40	30.40		78.6	78.8		5.43	5.44		10.70	10.74		3	
7/5/16	11:19	Fine	Middle	3.5	25.30	25.30	25.35	8.41	8.41	8.43	30.04	30.04	30.03	65.7	65.5	65.0	4.55	4.54	<u>4.51</u>	8.85	8.71	8.77	5	4.50
	11:21		Middle	3.5	25.40	25.40		8.44	8.44		30.01	30.01		64.8	64.1		4.49	4.44		8.79	8.71		4	
9/5/16	14:02	Fine	Middle	3.5	25.70	25.70	25.80	8.41	8.41	8.42	29.52	29.52	29.51	72.8	73.1	72.9	5.02	5.03	5.02	10.78	10.81	10.80	4	4.50
	14:04		Middle	3.5	25.90	25.90		8.43	8.43		29.50	29.50		73.1	72.7		5.03	5.00		10.79	10.81		5	
11/5/16	15:44	Fine	Middle	3.5	25.90	25.90	25.90	8.35	8.35	8.37	29.21	29.21	29.32	70.2	69.6	68.7	4.84	4.80	4.74	2.74	2.74	2.74	3	3.50
	15:46		Middle	3.5	25.90	25.90		8.39	8.39		29.42	29.42		68.3	66.8		4.71	4.60		2.74	2.74		4	
13/5/16	15:35	Fine	Middle	3.5	24.80	24.80	24.85	8.43	8.43	8.45	31.41	31.41	31.41	68.1	67.9	68.2	4.72	4.70	4.72	2.26	2.26	2.25	4	4.50
	15:37		Middle	3.5	24.90	24.90		8.47	8.47		31.40	31.40		68.6	68.1		4.75	4.71		2.26	2.20		5	
21/5/16	11:05	Cloudy	Middle	3.5	25.50	25.50	25.45	8.50	8.50	8.52	31.48	31.48	31.54	63.5	62.2	62.6	4.35	4.27	<u>4.29</u>	7.62	7.48	7.38	13	<u>13.50</u>
	11:07		Middle	3.5	25.40	25.40		8.54	8.54		31.60	31.60		62.0	62.5		4.25	4.28		7.36	7.04		14	
23/5/16	10:44	Fine	Middle	3.5	26.70	26.70	26.75	8.44	8.44	8.47	30.60	30.60	30.73	66.9	66.1	66.0	4.51	4.46	<u>4.45</u>	4.46	4.03	4.13	3	3.50
	10:46		Middle	3.5	26.80	26.80		8.49	8.49		30.85	30.85		65.5	65.4		4.41	4.40		4.01	4.00		4	
25/5/16	11:25	Fine	Middle	4.0	26.60	26.60	26.70	8.43	8.43	8.45	31.13	31.13	31.13	78.0	77.2	77.3	5.25	5.19	5.20	5.65	5.63	5.61	5	5.50
	11:27		Middle	4.0	26.80	26.80		8.47	8.47		31.13	31.13		77.0	77.0		5.18	5.18		5.57	5.59		6	
27/5/16	-	Strong Wind Signal No. 3	Middle	-	-	-	-	-	-	-	-	-	-	-	-	-	-	-	-	-	-	-	-	-
	-		Middle	-	-	-		-	-		-	-		-	-		-	-		-	-		-	
30/5/16	20:30	Cloudy	Middle	3.5	28.90	28.90	28.90	8.55	8.55	8.56	28.30	28.30	28.30	78.1	78.8	78.6	5.10	5.19	5.17	4.74	4.96	4.55	3	3.50
	20:31		Middle	3.5	28.90	28.90		8.56	8.56		28.30	28.30		79.0	78.3		5.21	5.16		4.23	4.28		4	

**Remarks:**

Single underline denotes exceedance over Action Level.

Double underline denotes exceedance over Limit Level.

Due to suspension of works under Contractor no. HK/2012/08, the water quality monitoring event on 17 May 2016 and 19 May 2016 were temporary suspended.

Due to the hoisting of Strong Wind Signal No. 3, the water quality monitoring event on 27 May 2016 during ebb tide was cancelled.



**Water Monitoring Result at Culvert J - Reference Station  
Mid-Ebb Tide**

Date	Time	Weather Condition	Sampling Depth		Water Temperature			pH			Salinity		DO Saturation		DO		Turbidity		Suspended Solids					
					°C		-		ppt		%		mg/L		NTU		mg/L							
			m		Value	Average	Value	Average	Value	Average	Value	Average	Value	Average	Value	Average	Value	Average						
3/5/16	9:53	Fine	Middle	4	24.40	24.40	24.45	8.39	8.39	8.40	29.41	29.41	29.40	58.6	59.5	59.2	4.14	4.20	4.18	8.79	8.72	8.72	4	4.00
	9:55		Middle	4	24.50	24.50		8.41	8.41		29.39	29.38		59.6	59.0		4.21	4.17		8.70	8.68		4	
5/5/16	12:15	Fine	Middle	3	25.50	25.50	25.65	8.29	8.29	8.32	30.10	30.10	30.10	75.9	75.0	75.4	5.22	5.16	5.19	11.36	11.21	11.15	4	5.00
	12:17		Middle	3	25.80	25.80		8.35	8.35		30.09	30.09		75.3	75.5		5.18	5.19		11.02	11.01		6	
7/5/16	11:15	Fine	Middle	4	26.10	26.10	26.25	8.32	8.32	8.35	29.92	29.91	29.86	59.7	60.0	58.7	4.08	4.10	4.01	9.01	9.00	8.99	6	5.50
	11:17		Middle	4	26.40	26.40		8.38	8.38		29.81	29.81		58.4	56.5		3.99	3.86		8.98	8.98		5	
9/5/16	13:58	Fine	Middle	4	26.20	26.20	26.40	8.34	8.34	8.37	28.96	28.96	28.95	67.8	67.8	66.9	4.64	4.29	4.48	9.98	9.62	9.69	5	5.00
	14:00		Middle	4	26.60	26.60		8.39	8.39		28.94	28.94		65.3	66.5		4.46	4.54		9.59	9.56		5	
11/5/16	15:40	Fine	Middle	4	25.80	25.80	25.85	8.34	8.34	8.35	27.09	27.09	27.08	54.9	54.8	54.8	3.83	3.83	3.82	5.33	5.36	5.35	2	2.00
	15:42		Middle	4	25.90	25.90		8.36	8.36		27.07	27.07		55.2	54.1		3.85	3.78		5.37	5.35		2	
13/5/16	15:31	Fine	Middle	4	25.10	25.10	25.20	8.36	8.36	8.39	29.73	29.73	29.72	72.0	70.8	70.4	5.01	4.92	4.90	4.82	4.82	4.82	4	4.00
	15:33		Middle	4	25.30	25.30		8.41	8.41		29.71	29.71		70.2	68.6		4.88	4.77		4.82	4.82		4	
21/5/16	11:01	Cloudy	Middle	4	25.50	25.50	25.50	8.44	8.44	8.47	30.76	30.75	31.24	62.3	61.2	60.7	4.29	4.21	4.18	5.88	5.89	5.89	9	8.50
	11:03		Middle	4	25.50	25.50		8.49	8.49		32.73	30.73		60.3	58.8		4.15	4.05		5.89	5.89		8	
23/5/16	10:40	Fine	Middle	4	26.70	26.70	26.75	8.47	8.47	8.47	28.58	28.58	28.56	52.7	55.2	54.1	3.59	3.76	3.69	5.89	5.89	5.90	5	4.50
	10:42		Middle	4	26.80	26.80		8.46	8.46		28.53	28.53		54.5	54.1		3.72	3.69		5.89	5.91		4	
25/5/16	11:20	Fine	Middle	4	27.20	27.20	27.30	8.39	8.39	8.40	29.95	29.95	29.95	70.8	71.2	70.7	4.75	4.77	4.74	6.50	6.21	6.32	6	5.50
	11:22		Middle	4	27.40	27.40		8.41	8.41		29.95	29.95		70.4	70.4		4.71	4.71		6.29	6.29		5	
27/5/16	-	Storm Wind Signal No. 3	Middle	-	-	-	-	-	-	-	-	-	-	-	-	-	-	-	-	-	-	-	-	
	-		Middle	-	-	-	-	-	-	-	-	-	-	-	-	-	-	-	-	-	-	-	-	
30/5/16	20:35	Cloudy	Middle	4	28.10	28.10	28.15	8.61	8.61	8.55	23.25	23.25	23.25	52.0	52.2	51.8	3.57	3.58	3.55	14.88	14.78	14.49	7	6.50
	20:36		Middle	4	28.20	28.20		8.48	8.48		23.25	23.25		51.7	51.2		3.54	3.51		14.23	14.08		6	

**Remarks:**

Due to suspension of works under Contractor no. HK/2012/08, the water quality monitoring event on 17 May 2016 and 19 May 2016 were temporary suspended.  
Due to the hoisting of Strong Wind Signal No. 3, the water quality monitoring event on 27 May 2016 during ebb tide was cancelled.



**Water Monitoring Result at M5B - Central Cooling Water Intake Group  
Mid-Flood Tide**

Date	Time	Weather Condition	Sampling Depth		Water Temperature			pH			Salinity			DO Saturation		DO		Turbidity			Suspended Solids			
					°C		-		ppt		%		mg/L		NTU		mg/L							
			m	Value	Average	Value	Average	Value	Average	Value	Average	Value	Average	Value	Average	Value	Average	Value	Average	Value	Average			
1/6/16	14:36	Fine	Middle	3.5	29.40	29.40	29.50	8.56	8.56	8.57	26.10	26.10	26.10	77.4	77.4	75.5	5.11	5.11	4.99	3.20	3.20	3.21	3	3.50
	14:38		Middle	3.5	29.60	29.60		8.58	8.58		26.09	26.09		75.1	72.1		4.96	4.78		3.22	3.22		4	
3/6/16	15:38	Fine	Middle	3.5	28.80	28.80	28.85	8.54	8.54	8.55	27.76	27.76	27.76	76.8	77.1	76.3	5.08	5.10	5.05	3.93	3.99	4.06	4	5.00
	15:40		Middle	3.5	28.90	28.90		8.56	8.56		27.75	27.75		75.6	75.7		5.00	5.00		4.15	4.16		6	
6/6/16	19:50	Cloudy	Middle	3.0	26.70	26.70	26.75	8.48	8.48	8.50	30.08	30.08	30.08	72.8	73.3	73.2	4.92	4.95	4.95	2.93	2.91	2.82	6	5.00
	19:51		Middle	3.0	26.80	26.80		8.52	8.52		30.08	30.08		73.1	73.6		4.94	4.98		2.80	2.62		4	
8/6/16	20:00	Cloudy	Middle	3.0	27.40	27.40	27.40	8.52	8.50	8.52	28.25	28.25	28.25	71.5	72.4	71.8	4.83	4.89	4.85	3.12	3.35	3.16	8	8.50
	20:01		Middle	3.0	27.40	27.40		8.52	8.52		28.25	28.25		71.8	71.4		4.85	4.82		3.09	3.06		9	
10/6/16	21:53	Cloudy	Middle	3.0	26.50	26.50	26.45	8.56	8.56	8.57	29.27	29.27	29.27	75.6	76.0	75.6	5.17	5.19	5.16	2.15	2.03	2.11	<2	<2
	21:54		Middle	3.0	26.40	26.40		8.57	8.57		29.27	29.27		75.5	75.1		5.16	5.13		2.17	2.08		<2	
14/6/16	23:50	Cloudy	Middle	3.0	28.10	28.10	28.10	8.37	8.37	8.38	24.97	24.97	24.97	70.7	71.1	71.2	4.80	4.83	4.85	3.01	2.60	2.71	11	11.50
	23:51		Middle	3.0	28.10	28.10		8.39	8.39		24.97	24.97		71.6	71.4		4.87	4.88		2.58	2.64		12	
16/6/16	6:06	Cloudy	Middle	3.5	27.90	27.90	27.95	8.43	8.43	8.44	22.14	22.14	22.14	69.5	71.7	71.0	4.81	4.96	4.91	2.46	2.42	2.49	2	2.00
	6:07		Middle	3.5	28.00	28.00		8.44	8.44		22.14	22.14		71.5	71.1		4.95	4.92		2.48	2.59		2	
18/6/16	16:50	Fine	Middle	3.5	27.30	27.30	27.35	8.45	8.42	8.45	27.02	27.02	27.03	62.6	66.4	64.9	4.61	4.52	<u>4.50</u>	4.68	4.68	4.68	6	6.00
	16:52		Middle	3.5	27.40	27.40		8.46	8.46		27.03	27.03		65.8	64.6		4.48	4.40		4.68	4.68		6	
20/6/16	19:40	Fine	Middle	3.0	28.50	28.50	28.55	8.30	8.30	8.35	26.54	26.54	26.55	79.2	82.8	81.8	5.30	5.53	5.45	6.94	6.96	6.85	8	8.50
	19:41		Middle	3.0	28.60	28.60		8.39	8.39		26.55	26.55		81.7	83.6		5.38	5.58		6.83	6.65		9	
22/6/16	19:15	Fine	Middle	3.0	27.70	27.70	27.80	8.35	8.35	8.37	28.17	28.17	28.17	81.7	83.4	82.5	5.47	5.58	5.52	6.24	6.09	6.15	8	8.00
	19:16		Middle	3.0	27.90	27.90		8.40	8.39		28.17	28.17		83.7	81.1		5.59	5.43		6.18	6.07		8	
24/6/16	22:31	Fine	Middle	3.0	29.40	29.40	29.45	8.63	8.63	8.63	29.31	29.31	29.32	72.8	74.1	73.2	4.72	4.91	4.77	4.36	4.09	4.10	4	5.00
	22:32		Middle	3.0	29.50	29.50		8.62	8.62		29.32	29.32		73.0	72.9		4.73	4.73		3.92	4.01		6	
27/6/16	10:35	Sunny	Middle	3.5	29.00	29.00	29.10	8.56	8.56	8.59	26.09	26.09	26.09	78.3	80.1	78.9	5.21	5.32	5.24	5.96	5.92	5.96	6	5.00
	10:37		Middle	3.5	29.20	29.20		8.62	8.62		26.08	26.08		77.9	79.1		5.17	5.25		5.95	5.99		4	
30/6/16	15:14	Fine	Middle	3.5	28.10	28.10	28.20	8.62	8.62	8.63	25.51	25.51	25.51	64.1	61.1	60.6	4.35	4.15	<u>4.12</u>	8.07	7.99	8.01	7	6.00
	15:16		Middle	3.5	28.30	28.30		8.63	8.63		25.50	25.50		59.2	58.1		4.02	3.94		7.99	8.00		5	

Remarks:  
Single underline denotes exceedance over Action Level.  
Double underline denotes exceedance over Limit Level.



**Water Monitoring Result at Culvert J - Reference Station  
Mid-Flood Tide**

Date	Time	Weather Condition	Sampling Depth		Water Temperature		pH		Salinity		DO Saturation		DO		Turbidity		Suspended Solids							
					°C		-		ppt		%		mg/L		NTU		mg/L							
			m	Value	Average	Value	Average	Value	Average	Value	Average	Value	Average	Value	Average	Value	Average	Value	Average					
1/6/16	14:32	Fine	Middle	3.5	29.80	29.80	29.95	8.50	8.50	8.52	25.41	25.41	25.41	77.5	76.1	75.1	5.10	5.04	4.95	4.29	4.30	4.26	4	4.50
	14:34		Middle	3.5	30.10	30.10		8.54	8.54		25.40	25.40		74.4	72.5		4.89	4.77		4.29	4.15		5	
3/6/16	15:33	Fine	Middle	3.5	29.30	29.30	29.40	8.48	8.48	8.52	24.92	24.92	24.91	77.1	75.2	75.9	5.14	5.01	5.06	7.37	7.44	7.48	8	7.00
	15:35		Middle	3.5	29.50	29.50		8.55	8.55		24.90	24.90		75.1	76.3		5.00	5.08		7.59	7.53		6	
6/6/16	20:00	Cloudy	Middle	2.5	26.60	26.60	26.65	8.55	8.55	8.55	27.60	27.60	27.55	68.7	69.1	68.4	4.72	4.74	4.70	4.26	4.28	4.22	6	5.50
	20:01		Middle	2.5	26.70	26.70		8.55	8.55		27.50	27.50		67.7	68.0		4.65	4.67		4.19	4.16		5	
8/6/16	20:10	Cloudy	Middle	2.5	27.20	27.20	27.25	8.53	8.53	8.53	23.16	23.16	23.16	68.6	69.1	68.8	4.78	4.82	4.79	9.34	9.05	9.17	10	9.00
	20:11		Middle	2.5	27.30	27.30		8.52	8.52		23.16	23.16		68.9	68.4		4.80	4.77		9.08	9.19		8	
10/6/16	22:00	Cloudy	Middle	2.5	26.40	26.40	26.40	8.64	8.64	8.62	24.42	24.42	24.40	60.9	62.9	62.0	4.28	4.42	4.36	8.22	8.00	8.08	5	4.50
	22:01		Middle	2.5	26.40	26.40		8.59	8.60		24.37	24.37		62.0	62.3		4.36	4.38		7.98	8.13		4	
14/6/16	23:58	Cloudy	Middle	2.5	28.30	28.30	28.30	8.44	8.44	8.43	22.41	22.40	22.40	59.1	59.9	60.0	4.10	4.14	4.14	4.70	4.73	4.72	15	14.50
	23:59		Middle	2.5	28.30	28.30		8.42	8.42		22.40	22.39		60.0	60.9		4.13	4.18		4.74	4.69		14	
16/6/16	6:13	Cloudy	Middle	3.0	27.70	27.70	27.70	8.49	8.49	8.48	20.20	20.20	20.21	66.0	67.2	66.9	4.66	4.74	4.72	3.00	3.02	2.99	3	2.50
	6:14		Middle	3.0	27.70	27.70		8.47	8.47		20.21	20.21		67.4	67.1		4.75	4.73		2.98	2.96		2	
18/6/16	16:46	Fine	Middle	3.5	27.50	27.50	27.65	8.34	8.34	8.38	25.68	25.68	25.66	67.6	67.6	67.4	4.62	4.61	4.60	7.76	7.26	7.60	8	8.50
	16:48		Middle	3.5	27.80	27.80		8.42	8.42		25.63	25.63		67.4	67.1		4.59	4.57		7.83	7.53		9	
20/6/16	19:52	Fine	Middle	2.5	28.60	28.60	28.60	8.67	8.67	8.65	21.31	21.31	21.31	63.2	62.2	63.1	4.35	4.27	4.34	12.43	11.89	12.16	10	9.00
	19:53		Middle	2.5	28.60	28.60		8.63	8.63		21.30	21.30		63.0	63.8		4.34	4.39		12.26	12.04		8	
22/6/16	19:23	Fine	Middle	2.5	27.80	27.80	27.90	8.62	8.62	8.62	25.13	25.13	25.13	76.7	77.0	76.9	5.23	5.25	5.24	11.57	11.09	11.23	12	12.00
	19:24		Middle	2.5	28.00	28.00		8.61	8.61		25.12	25.12		76.3	77.5		5.20	5.27		11.06	11.19		12	
24/6/16	22:37	Fine	Middle	2.5	29.60	29.60	29.60	8.59	8.59	8.58	26.17	26.17	26.17	46.4	47.7	47.3	3.10	3.14	3.12	4.75	4.98	4.81	6	6.50
	22:38		Middle	2.5	29.60	29.60		8.56	8.56		26.17	26.17		47.5	47.4		3.13	3.12		5.01	4.48		7	
27/6/16	10:30	Sunny	Middle	3.5	29.00	29.00	29.10	8.50	8.50	8.52	23.97	23.97	23.97	70.1	70.9	70.1	4.73	4.77	4.72	9.27	9.27	9.29	6	6.50
	10:32		Middle	3.5	29.20	29.20		8.53	8.53		23.97	23.97		69.3	69.9		4.68	4.70		9.30	9.31		7	
30/6/16	15:10	Fine	Middle	3.5	28.50	28.50	28.60	8.61	8.61	8.62	23.71	23.71	23.67	53.6	54.0	54.3	3.64	3.67	3.68	9.87	9.90	9.92	6	6.50
	15:12		Middle	3.5	28.70	28.70		8.63	8.63		23.62	23.62		54.5	54.9		3.70	3.72		9.91	9.99		7	



**Water Monitoring Result at M5B - Central Colling Water Intake Group  
Mid-Ebb Tide**

Date	Time	Weater Condition	Sampling Depth		Water Temperature			pH			Salinity			DO Saturation			DO			Turbidity			Suspended Solids	
					°C		-		ppt		%		mg/L		NTU		mg/L							
					Value	Average	Value	Average	Value	Average	Value	Average	Value	Average	Value	Average	Value	Average	Value	Average				
1/6/16	8:50	Fine	Middle	3.5	28.10	28.10	28.15	8.54	8.54	8.56	26.62	26.62	26.62	78.5	78.5	77.8	5.29	5.29	5.24	3.86	3.87	3.85	4	4.50
	8:52		Middle	3.5	28.20	28.20		8.57	8.57		26.62	26.62		76.9	77.3		5.18	5.20		3.85	3.80		5	
3/6/16	10:45	Fine	Middle	4.0	29.00	29.00	29.05	8.51	8.51	8.54	26.20	26.20	26.20	77.1	77.5	77.3	5.12	5.15	5.13	5.87	5.90	5.91	4	5.00
	10:47		Middle	4.0	29.10	29.10		8.57	8.57		26.20	26.20		77.0	77.4		5.12	5.14		5.95	5.93		6	
6/6/16	-	Amber Rainstorm Warning Signal	Middle	-	-	-	-	-	-	-	-	-	-	-	-	-	-	-	-	-	-	-	-	-
	-		Middle	-	-	-		-	-		-	-		-	-		-	-		-	-		-	
8/6/16	15:02	Cloudy	Middle	3.5	27.80	27.80	27.75	8.46	8.46	8.48	29.07	29.07	29.07	62.7	61.8	62.0	4.20	4.14	<u>4.15</u>	4.05	4.02	3.99	7	7.00
	15:04		Middle	3.5	27.70	27.70		8.49	8.49		29.06	29.06		61.7	61.8		4.13	4.14		4.01	3.89		7	
10/6/16	18:12	Fine	Middle	3.5	27.40	27.40	27.35	8.28	8.28	8.33	27.91	27.91	27.94	62.4	61.5	61.4	4.24	4.17	<u>4.16</u>	4.39	4.33	4.40	4	3.50
	18:14		Middle	3.5	27.30	27.30		8.37	8.37		27.96	27.96		61.1	60.4		4.14	4.09		4.38	4.48		3	
13/6/16	19:55	Cloudy	Middle	3.0	28.20	28.20	28.25	8.39	8.39	8.40	25.16	25.16	25.16	72.0	73.6	73.9	4.88	4.90	4.99	4.68	4.61	4.54	11	12.00
	19:56		Middle	3.0	28.30	28.30		8.40	8.40		25.16	25.16		74.4	75.6		5.04	5.12		4.45	4.40		13	
16/6/16	10:20	Fine	Middle	3.5	28.80	28.80	28.80	8.35	8.35	8.37	20.86	20.86	20.86	72.8	73.0	73.3	5.01	5.02	5.04	4.03	4.00	3.99	3	3.00
	10:22		Middle	3.5	28.80	28.80		8.38	8.38		20.86	20.86		74.4	73.0		5.11	5.02		3.97	3.96		3	
18/6/16	11:07	Fine	Middle	3.5	28.30	28.30	28.35	8.28	8.28	8.31	26.61	26.61	26.60	64.7	64.0	63.5	4.34	4.30	<u>4.26</u>	5.22	5.20	5.06	4	4.50
	11:09		Middle	3.5	28.40	28.40		8.34	8.34		26.59	26.59		62.8	62.4		4.22	4.19		4.93	4.90		5	
20/6/16	11:52	Sunny	Middle	3.5	28.70	28.70	28.75	8.69	8.69	8.71	25.84	25.84	25.83	73.8	73.0	72.7	4.94	4.88	4.87	5.48	5.47	5.55	8	8.50
	11:54		Middle	3.5	28.80	28.80		8.72	8.72		25.82	25.82		72.2	71.9		4.83	4.81		5.62	5.62		9	
22/6/16	11:04	Sunny	Middle	3.5	27.80	27.80	27.80	8.53	8.53	8.56	29.03	29.03	28.96	68.7	69.6	69.3	4.60	4.66	4.63	5.89	5.77	5.82	6	6.00
	11:06		Middle	3.5	27.80	27.80		8.59	8.59		28.88	28.88		69.8	68.9		4.67	4.60		5.87	5.76		6	
24/6/16	15:08	Fine	Middle	3.5	28.30	28.30	28.40	8.54	8.54	8.56	29.11	29.11	29.11	80.4	78.5	78.0	5.32	5.26	5.18	4.33	4.29	4.18	6	6.00
	15:10		Middle	3.5	28.50	28.50		8.58	8.58		29.11	29.11		76.3	76.8		5.05	5.07		4.05	4.03		6	
27/6/16	16:39	Sunny	Middle	3.5	29.70	29.70	29.70	8.63	8.63	8.69	25.87	25.87	25.98	71.4	70.0	71.2	4.71	4.61	4.69	6.00	6.00	6.03	4	4.50
	16:41		Middle	3.5	29.70	29.70		8.74	8.74		26.09	26.09		71.2	72.3		4.69	4.76		6.06	6.07		5	
30/6/16	8:33	Fine	Middle	3.5	28.30	28.30	28.35	8.66	8.66	8.67	24.67	24.67	24.69	61.0	60.6	60.2	4.11	4.11	<u>4.08</u>	7.53	7.71	7.60	3	3.50
	8:35		Middle	3.5	28.40	28.40		8.67	8.67		24.71	24.71		60.0	59.1		4.07	4.01		7.61	7.56		4	

Remarks:  
 Single underline denotes exceedance over Action Level.  
 Double underline denotes exceedance over Limit Level.  
 Due to the hoisting of Amber Rainstorm Warning Signal, the water quality monitoring events on 6 July 216 during ebb tide was cancelled.



**Water Monitoring Result at Culvert J - Reference Station  
Mid-Ebb Tide**

Date	Time	Weater Condition	Sampling Depth		Water Temperature			pH			Salinity			DO Saturation			DO			Turbidity			Suspended Solids	
					°C		-		ppt		%		mg/L		NTU		mg/L							
					Value	Average	Value	Average	Value	Average	Value	Average	Value	Average	Value	Average	Value	Average	Value	Average	Value	Average		
1/6/16	8:45	Fine	Middle	4	28.30	28.30	28.40	8.46	8.46	8.49	26.12	26.12	26.12	78.6	79.1	78.4	5.29	5.32	5.27	4.15	4.15	4.10	4	3.50
	8:47		Middle	4	28.50	28.50		8.52	8.52		26.12	26.12		78.3	77.5		5.26	5.21		4.08	4.02		3	
3/6/16	10:40	Fine	Middle	4	29.10	29.10	29.10	8.50	8.50	8.50	24.31	24.31	24.31	74.4	74.4	74.0	4.99	4.99	4.97	6.80	6.89	6.84	6	6.50
	10:42		Middle	4	29.10	29.10		8.50	8.50		24.31	24.31		73.0	74.1		4.94	4.97		6.83	6.82		7	
6/6/16	-	Amber Rainstorm Warning Signal	Middle	-	-	-	-	-	-	-	-	-	-	-	-	-	-	-	-	-	-	-	-	-
	-		Middle	-	-	-		-	-		-	-		-	-		-	-		-	-		-	
8/6/16	14:58	Cloudy	Middle	4	27.70	27.70	27.75	8.43	8.43	8.44	28.86	28.86	28.86	62.3	61.7	62.3	4.17	4.13	4.16	2.84	2.78	2.83	7	7.50
	15:00		Middle	4	27.80	27.80		8.45	8.45		28.86	28.86		62.1	62.9		4.15	4.20		2.83	2.85		8	
10/6/16	18:08	Fine	Middle	4	27.40	27.40	27.40	8.20	8.20	8.26	22.48	22.48	22.48	63.5	61.7	62.2	4.43	4.37	4.36	9.60	9.79	9.69	8	8.50
	18:10		Middle	4	27.40	27.40		8.32	8.32		22.47	22.47		60.3	63.2		4.21	4.41		9.69	9.68		9	
13/6/16	20:07	Cloudy	Middle	3	27.80	27.80	27.80	8.51	8.51	8.49	18.69	18.69	18.69	58.8	59.4	59.3	4.16	4.20	4.19	9.68	9.23	9.39	16	16.00
	20:08		Middle	3	27.80	27.80		8.47	8.47		18.69	18.69		59.6	59.4		4.21	4.20		9.31	9.34		16	
16/6/16	10:15	Fine	Middle	4	28.70	28.70	28.80	8.31	8.31	8.32	20.51	20.51	20.51	69.7	69.9	68.9	4.80	4.81	4.75	5.41	5.45	5.45	5	5.50
	10:17		Middle	4	28.90	28.90		8.32	8.32		20.51	20.51		68.4	67.7		4.71	4.66		5.46	5.46		6	
18/6/16	11:03	Fine	Middle	4	28.30	28.30	28.45	8.25	8.25	8.27	25.39	25.39	25.36	55.4	56.0	56.6	3.74	3.77	3.82	5.62	5.82	5.81	6	6.50
	11:05		Middle	4	28.60	28.60		8.28	8.28		25.32	25.32		57.4	57.4		3.87	3.88		5.89	5.89		7	
20/6/16	11:48	Sunny	Middle	4	28.90	28.90	29.05	8.81	8.61	8.69	25.62	25.62	25.61	76.3	76.6	76.0	5.08	5.11	5.07	5.90	5.90	5.91	6	6.50
	11:50		Middle	4	29.20	29.20		8.66	8.66		25.62	25.58		76.2	74.9		5.08	4.99		5.91	5.93		7	
22/6/16	11:08	Sunny	Middle	4	27.80	27.80	27.80	8.62	8.62	8.61	26.76	26.76	26.75	64.9	63.9	63.7	4.39	4.32	4.31	6.67	6.82	6.81	10	10.00
	11:10		Middle	4	27.80	27.80		8.60	8.60		26.74	26.74		63.5	62.6		4.30	4.23		6.85	6.89		10	
24/6/16	15:04	Fine	Middle	4	28.60	28.60	28.80	8.52	8.52	8.52	26.17	26.17	26.17	70.4	67.4	68.3	4.70	4.50	4.57	8.17	8.15	8.21	4	4.00
	15:06		Middle	4	29.00	29.00		8.52	8.52		26.16	26.16		67.4	68.1		4.50	4.58		8.25	8.25		4	
27/6/16	16:35	Sunny	Middle	4	29.50	29.50	29.60	8.62	8.62	8.64	23.27	23.27	23.25	64.4	66.2	66.1	4.32	4.43	4.43	9.91	9.93	9.96	6	6.00
	16:37		Middle	4	29.70	29.70		8.65	8.65		23.22	23.22		68.0	65.8		4.55	4.40		9.94	10.06		6	
30/6/16	8:29	Fine	Middle	4	28.20	28.20	28.25	8.59	8.59	8.62	24.79	24.79	24.80	58.5	57.6	57.8	3.98	3.92	3.93	6.82	6.86	6.84	4	3.50
	8:30		Middle	4	28.30	28.30		8.65	8.65		24.80	24.80		57.4	57.6		3.89	3.91		6.84	6.83		3	

Remark:  
Due to the hoisting of Amber Rainstorm Warning Signal, the water quality monitoring events on 6 July 216 during ebb tide was cancelled.





**Water Monitoring Result at M5B - Central Cooling Water Intake Group  
Mid-Flood Tide**

Date	Time	Weather Condition	Sampling Depth		Water Temperature		pH		Salinity		DO Saturation		DO		Turbidity		Suspended Solids							
					°C		-		ppt		%		mg/L		NTU		mg/L							
			m	Value	Average	Value	Average	Value	Average	Value	Average	Value	Average	Value	Average	Value	Average	Value	Average					
2/7/16	17:00	Cloudy	Middle	3.5	27.90	27.90	27.90	8.65	8.65	8.67	24.57	24.57	24.57	62.1	61.1	60.8	4.25	4.18	<u>4.16</u>	12.00	12.00	11.88	10	10.00
	17:02		Middle	3.5	27.90	27.90		8.68	8.68		24.57	24.57		60.3	59.7		4.12	4.09		11.58	11.92		10	
4/7/16	19:40	Cloudy	Middle	3.0	27.90	27.90	27.93	8.45	8.45	8.46	25.43	25.43	25.43	76.1	76.2	75.7	5.17	5.17	5.14	6.22	6.17	6.16	9	9.50
	19:41		Middle	3.0	28.00	27.90		8.46	8.46		25.43	25.43		75.3	75.0		5.12	5.10		6.15	6.10		10	
6/7/16	19:28	Cloudy	Middle	3.0	28.00	28.00	28.00	8.36	8.36	8.38	25.13	25.13	25.13	71.7	71.8	71.6	4.88	4.89	4.87	6.52	6.81	6.53	5	4.50
	19:29		Middle	3.0	28.00	28.00		8.39	8.39		25.13	25.13		71.6	71.1		4.87	4.83		6.57	6.20		4	
8/7/16	22:42	Fine	Middle	3.0	30.00	30.00	30.00	8.49	8.49	8.50	26.87	26.87	26.87	75.3	75.0	75.1	4.92	4.90	4.90	3.76	3.98	3.97	8	8.00
	22:43		Middle	3.0	30.00	30.00		8.51	8.51		26.87	26.87		74.4	75.7		4.85	4.94		4.12	4.00		8	
11/7/16	22:20	Cloudy	Middle	3.0	27.40	27.40	27.40	8.43	8.43	8.45	28.00	28.00	28.00	76.6	76.8	76.5	5.18	5.19	5.17	2.82	2.74	2.78	10	10.00
	22:21		Middle	3.0	27.40	27.40		8.46	8.46		28.00	28.00		76.4	76.0		5.17	5.14		2.71	2.85		10	
14/7/16	4:17	Cloudy	Middle	3.5	26.50	26.50	26.60	8.44	8.44	8.45	28.02	28.01	28.01	70.9	71.6	71.6	4.86	4.91	4.91	2.74	2.59	2.54	9	9.00
	4:18		Middle	3.5	26.70	26.70		8.46	8.46		28.01	28.01		72.1	71.6		4.94	4.91		2.40	2.44		9	
16/7/16	17:04	Fine	Middle	3.5	27.80	27.80	27.85	8.41	8.41	8.42	26.76	26.76	26.78	82.1	81.7	81.8	5.51	5.52	5.51	4.77	4.78	4.76	8	8.00
	17:06		Middle	3.5	27.90	27.90		8.42	8.42		26.79	26.79		83.3	80.0		5.62	5.40		4.72	4.78		8	
18/7/16	17:19	Fine	Middle	3.5	27.40	27.40	27.45	8.41	8.41	8.43	27.14	27.14	27.14	87.2	86.5	86.8	5.92	5.87	5.89	4.90	4.93	4.97	6	7.00
	17:21		Middle	3.5	27.50	27.50		8.44	8.44		27.13	27.13		87.2	86.3		5.92	5.85		5.02	5.02		8	
20/7/16	19:52	Cloudy	Middle	3.0	26.80	26.80	26.90	7.98	7.97	8.01	28.72	28.72	28.73	81.2	81.1	81.0	5.51	5.51	5.50	4.41	4.29	4.22	9	8.00
	19:53		Middle	3.0	27.00	27.00		8.04	8.04		28.73	28.73		80.9	80.8		5.50	5.48		4.06	4.11		7	
22/7/16	21:36	Fine	Middle	3.5	28.10	28.10	28.00	7.83	7.83	7.85	30.68	30.68	30.68	72.0	72.6	72.6	4.74	4.78	4.78	4.95	5.08	4.78	7	6.50
	21:37		Middle	3.5	27.90	27.90		7.86	7.86		30.68	30.68		72.8	72.8		4.79	4.79		4.67	4.43		6	
25/7/16	9:24	Fine	Middle	3.5	26.10	26.10	25.95	8.17	8.17	8.18	31.40	31.40	31.39	73.8	72.3	71.1	5.04	4.93	4.86	4.40	4.34	4.37	7	7.00
	9:26		Middle	3.5	25.80	25.80		8.19	8.19		31.38	31.38		70.0	68.4		4.78	4.67		4.30	4.43		7	
27/7/16	10:50	Fine	Middle	3.5	26.40	26.40	26.55	8.23	8.23	8.24	31.53	31.53	31.53	80.6	81.3	80.7	5.42	5.47	5.43	7.36	7.53	7.63	12	<u>13.00</u>
	10:52		Middle	3.5	26.70	26.70		8.24	8.24		31.52	31.52		80.0	80.9		5.38	5.43		7.70	7.91		14	
29/7/16	15:14	Fine	Middle	3.5	27.80	27.80	27.90	8.32	8.32	8.33	31.13	31.13	31.06	73.0	74.9	73.8	4.80	4.91	4.85	5.13	4.90	4.99	7	6.50
	15:16		Middle	3.5	28.00	28.00		8.33	8.33		30.99	30.99		74.6	72.5		4.91	4.77		5.00	4.92		6	

Remarks:  
Single underline denotes exceedance over Action Level.  
Double underline denotes exceedance over Limit Level.



**Water Monitoring Result at Culvert J - Reference Station  
Mid-Flood Tide**

Date	Time	Weather Condition	Sampling Depth		Water Temperature			pH			Salinity		DO Saturation		DO		Turbidity		Suspended Solids					
					°C			-			ppt		%		mg/L		NTU		mg/L					
			m	Value	Average	Value	Average	Value	Average	Value	Average	Value	Average	Value	Average	Value	Average	Value	Average	Value	Average			
2/7/16	16:56	Cloudy	Middle	3.5	28.10	28.10	28.10	8.62	8.62	8.64	23.32	23.32	23.32	54.7	56.2	56.4	3.76	3.86	3.87	9.14	9.15	9.15	7	8.00
	16:58		Middle	3.5	28.10	28.10		8.65	8.65		23.32	23.32		57.4	57.1		3.93	3.91		9.15	9.14		9	
4/7/16	19:45	Cloudy	Middle	2.5	27.90	27.90	27.95	8.53	8.53	8.53	24.17	24.17	24.17	65.1	65.3	65.6	4.46	4.48	4.50	6.43	6.52	6.50	9	8.50
	19:46		Middle	2.5	28.00	28.00		8.52	8.52		24.17	24.17		66.1	65.9		4.53	4.51		6.60	6.46		8	
6/7/16	19:35	Cloudy	Middle	2.5	28.00	28.00	28.00	8.48	8.48	8.47	22.03	22.03	22.03	68.0	68.6	67.6	4.71	4.75	4.68	8.02	7.97	7.96	6	6.50
	19:36		Middle	2.5	28.00	28.00		8.45	8.45		22.03	22.03		67.5	66.3		4.67	4.58		7.99	7.85		7	
8/7/16	22:50	Fine	Middle	2.5	30.90	30.90	30.90	8.52	8.52	8.51	23.05	23.05	23.06	40.7	42.0	42.1	2.68	2.76	2.77	4.59	4.86	4.72	10	9.50
	22:51		Middle	2.5	30.90	30.90		8.50	8.50		23.06	23.06		42.9	42.8		2.82	2.82		4.81	4.60		9	
11/7/16	22:26	Cloudy	Middle	2.5	27.40	27.40	27.45	8.54	8.54	8.49	24.26	24.26	24.26	54.9	55.1	54.6	3.79	3.80	3.77	5.64	5.95	5.91	10	9.50
	22:27		Middle	2.5	27.50	27.50		8.43	8.43		24.25	24.25		54.7	53.7		3.77	3.70		6.06	6.00		9	
14/7/16	4:22	Cloudy	Middle	3.0	26.80	26.80	26.85	8.54	8.54	8.52	22.60	22.60	22.59	67.6	67.8	68.0	4.75	4.76	4.78	3.36	3.23	3.19	6	5.50
	4:23		Middle	3.0	26.90	26.90		8.50	8.50		22.59	22.58		68.3	68.4		4.81	4.81		3.04	3.12		5	
16/7/16	17:00	Fine	Middle	3.5	28.90	28.90	28.85	8.41	8.41	8.42	25.52	25.52	25.50	82.6	79.7	80.5	5.55	5.36	5.41	5.51	5.67	5.57	6	6.00
	17:02		Middle	3.5	28.80	28.80		8.42	8.42		25.47	25.47		80.0	79.6		5.37	5.34		5.59	5.52		6	
18/7/16	17:15	Fine	Middle	3.5	28.10	28.10	28.15	8.39	8.39	8.40	25.18	25.18	25.16	74.7	77.6	76.7	5.07	5.27	5.20	8.07	7.92	7.95	9	8.50
	17:17		Middle	3.5	28.20	28.20		8.40	8.40		25.14	25.14		78.0	76.3		5.29	5.18		7.91	7.91		8	
20/7/16	20:00	Cloudy	Middle	2.5	27.00	27.00	27.05	7.95	7.95	7.95	26.60	26.60	26.60	73.9	74.9	73.7	5.07	5.13	5.06	5.70	5.43	5.41	7	7.00
	20:01		Middle	2.5	27.10	27.10		7.96	7.95		26.60	26.60		73.6	72.3		5.04	4.99		5.26	5.23		7	
22/7/16	21:41	Fine	Middle	3.0	27.60	27.60	27.60	7.93	7.93	7.91	23.83	23.83	23.83	22.1	23.2	22.0	1.59	1.61	1.53	7.95	7.82	7.92	6	7.00
	21:42		Middle	3.0	27.60	27.60		7.89	7.89		23.83	23.83		21.0	21.6		1.43	1.47		7.90	7.99		8	
25/7/16	9:20	Fine	Middle	3.5	26.30	26.30	26.30	8.20	8.20	8.19	29.54	29.54	29.52	62.1	62.1	61.5	4.25	4.24	4.20	6.65	6.81	6.72	8	7.50
	9:22		Middle	3.5	26.30	26.30		8.18	8.18		29.50	29.50		61.6	60.1		4.21	4.11		6.72	6.71		7	
27/7/16	10:45	Fine	Middle	3.5	27.10	27.10	27.30	8.19	8.19	8.20	30.72	30.72	30.71	72.2	74.1	73.3	4.82	4.96	4.89	6.64	6.92	6.82	11	11.50
	10:47		Middle	3.5	27.50	27.50		8.21	8.21		30.70	30.70		74.2	72.6		4.95	4.84		6.92	6.81		12	
29/7/16	15:10	Fine	Middle	3.5	28.30	28.30	28.65	8.24	8.24	8.26	30.89	30.89	30.80	79.6	79.6	77.9	5.20	5.20	5.09	5.14	5.23	5.16	6	5.50
	15:12		Middle	3.5	29.00	29.00		8.28	8.28		30.70	30.70		77.4	75.1		5.04	4.90		5.16	5.09		5	



**Water Monitoring Result at M5B - Central Colling Water Intake Group  
Mid-Ebb Tide**

Date	Time	Weather Condition	Sampling Depth		Water Temperature		pH			Salinity		DO Saturation		DO		Turbidity		Suspended Solids						
					°C		-			ppt		%		mg/L		NTU		mg/L						
					Value	Average	Value	Average	Value	Average	Value	Average	Value	Average	Value	Average	Value	Average	Value	Average				
2/7/16	10:33	Cloudy	Middle	3.5	28.90	28.90	28.80	8.64	8.64	8.66	23.71	23.71	23.71	59.1	58.1	58.3	4.01	3.94	<u>3.95</u>	6.96	6.97	7.03	5	5.00
	10:35		Middle	3.5	28.70	28.70		8.67	8.67		23.71	23.71		57.6	58.2		3.90	3.95		7.05	7.15		5	
4/7/16	10:35	Fine	Middle	4.0	28.00	28.00	28.05	8.45	8.45	8.47	25.14	25.14	25.14	71.0	70.4	70.6	4.82	4.78	4.79	8.83	8.83	8.83	5	4.50
	10:37		Middle	4.0	28.10	28.10		8.49	8.49		25.14	25.14		70.7	70.2		4.80	4.77		8.81	8.83		4	
6/7/16	-	Amber Rainstorm Warning Signal	Middle	-	-	-	-	-	-	-	-	-	-	-	-	-	-	-	-	-	-	-	-	-
	-		Middle	-	-	-		-	-		-	-		-	-		-	-		-	-		-	
8/7/16	14:44	Fine	Middle	3.5	28.80	28.80	28.85	8.24	8.24	8.25	26.46	26.46	26.46	78.5	76.5	75.9	5.23	5.10	5.06	2.66	2.79	2.61	6	6.00
	14:46		Middle	3.5	28.90	28.90		8.26	8.26		26.45	26.45		74.7	74.0		4.98	4.93		2.50	2.48		6	
11/7/16	15:50	Fine	Middle	4.0	27.60	27.60	27.70	8.35	8.35	8.35	27.94	27.94	27.94	95.7	96.8	96.2	6.44	6.51	6.47	2.52	2.54	2.48	8	7.50
	15:52		Middle	4.0	27.80	27.80		8.35	8.35		27.93	27.93		96.7	95.7		6.50	6.44		2.55	2.32		7	
14/7/16	8:43	Cloudy	Middle	3.5	26.80	26.80	26.75	8.15	8.15	8.16	27.70	27.07	27.23	73.5	73.0	72.1	5.06	5.20	5.00	2.55	2.54	2.62	10	10.00
	8:45		Middle	3.5	26.70	26.70		8.17	8.17		27.08	27.08		71.7	70.0		4.94	4.81		2.68	2.72		10	
16/7/16	10:38	Fine	Middle	3.5	27.80	27.80	27.90	8.29	8.29	8.34	25.44	25.44	25.41	81.6	79.1	79.3	5.55	5.38	5.40	2.85	2.99	2.95	6	6.00
	10:40		Middle	3.5	28.00	28.00		8.38	8.38		25.38	25.38		79.1	77.3		5.39	5.26		3.00	2.97		6	
18/7/16	11:49	Fine	Middle	3.5	28.80	28.80	28.80	8.35	8.35	8.39	26.13	26.13	26.12	82.4	81.6	81.2	5.50	5.45	5.42	4.40	4.43	4.40	6	6.00
	11:51		Middle	3.5	28.80	28.80		8.42	8.42		26.11	26.11		80.6	80.2		5.39	5.35		4.33	4.42		6	
20/7/16	10:23	Fine	Middle	3.5	26.80	26.80	26.85	8.30	8.30	8.31	29.00	29.00	29.02	71.7	69.3	69.9	4.86	4.70	4.74	3.69	3.43	3.47	4	4.50
	10:25		Middle	3.5	26.90	26.90		8.32	8.32		29.03	29.03		69.4	69.3		4.71	4.70		3.39	3.37		5	
22/7/16	11:30	Fine	Middle	3.5	26.20	26.20	26.30	8.28	8.28	8.29	30.97	30.97	30.96	83.2	82.6	82.6	5.64	5.59	5.59	3.45	3.40	3.40	6	7.00
	11:32		Middle	3.5	26.40	26.40		8.29	8.29		30.94	30.94		82.1	82.4		5.55	5.57		3.37	3.39		8	
25/7/16	15:33	Sunny	Middle	3.5	27.20	27.20	27.30	8.34	8.34	8.35	31.48	31.48	31.41	75.6	74.3	73.9	5.02	4.91	4.90	3.69	3.61	3.68	6	6.00
	15:35		Middle	3.5	27.40	27.40		8.35	8.35		31.33	31.33		73.5	72.2		4.88	4.79		3.68	3.73		6	
27/7/16	16:55	Fine	Middle	3.5	27.00	27.00	27.00	8.26	8.26	8.28	31.53	31.53	31.47	93.7	94.2	93.7	6.28	6.31	6.26	4.32	4.33	4.32	8	8.50
	16:57		Middle	3.5	27.00	27.00		8.29	8.29		31.30	31.50		93.9	92.9		6.29	6.16		4.30	4.31		9	
29/7/16	8:39	Fine	Middle	3.5	27.00	27.00	26.85	8.28	8.28	8.30	30.37	30.37	30.43	76.6	76.3	75.8	5.17	5.15	5.11	3.52	3.45	3.58	3	3.00
	8:41		Middle	3.5	26.70	26.70		8.31	8.31		30.48	30.48		75.4	74.7		5.09	5.04		3.57	3.79		3	

Remarks:  
Single underline denotes exceedance over Action Level.  
Double underline denotes exceedance over Limit Level.

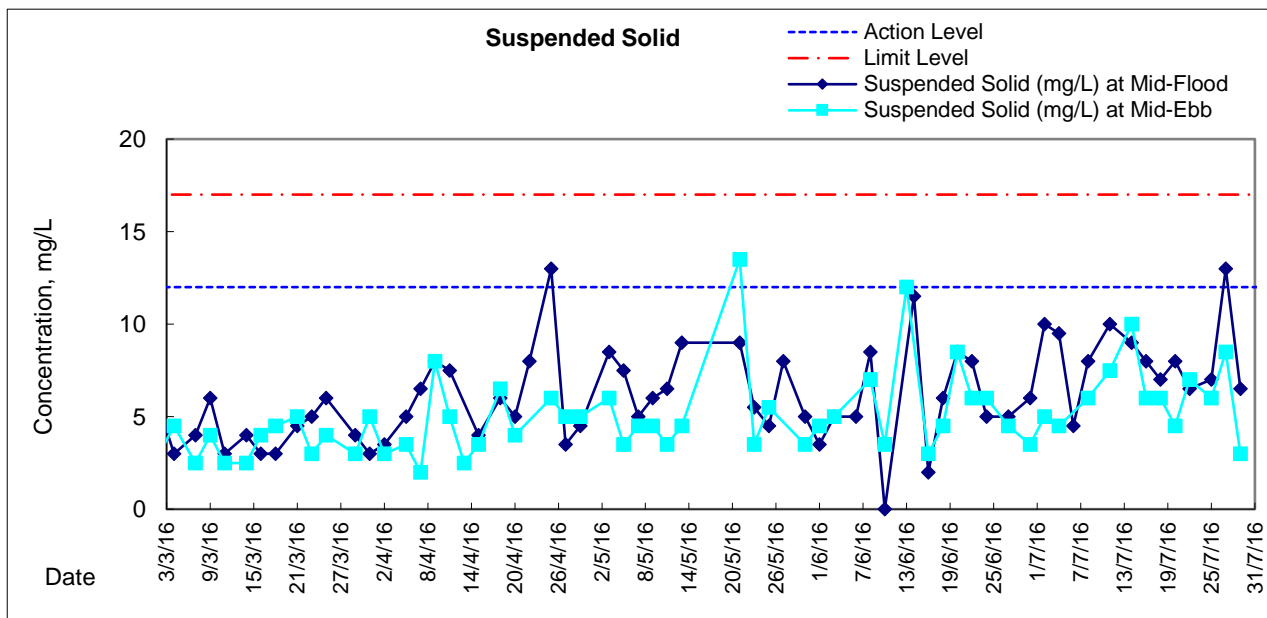
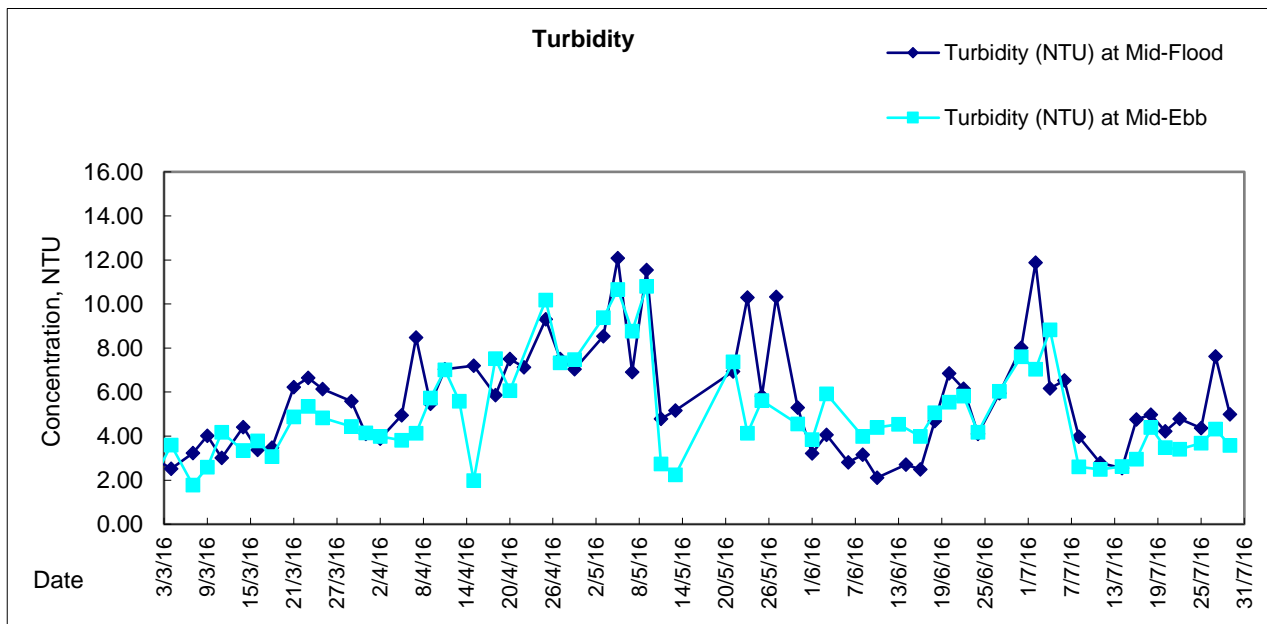
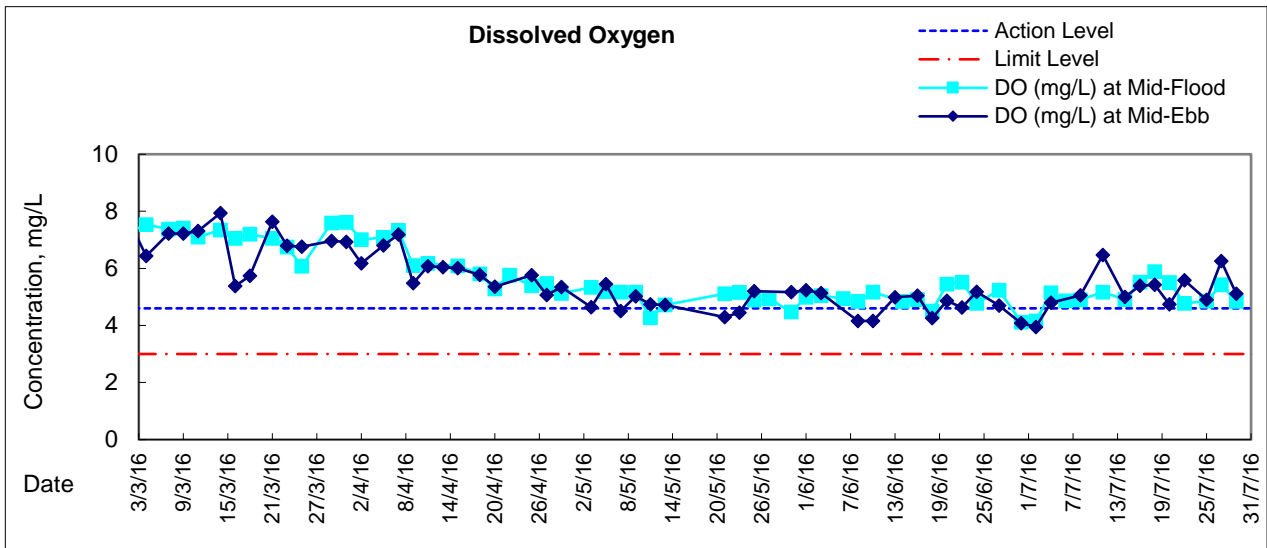


**Water Monitoring Result at Culvert J - Reference Station  
Mid-Ebb Tide**

Date	Time	Weather Condition	Sampling Depth		Water Temperature		pH			Salinity		DO Saturation		DO		Turbidity		Suspended Solids						
					°C		-		ppt		%		mg/L		NTU		mg/L							
			m	Value	Average	Value	Average	Value	Average	Value	Average	Value	Average	Value	Average	Value	Average	Value	Average					
2/7/16	10:29	Cloudy	Middle	4	28.90	28.90	28.90	8.57	8.57	8.61	21.58	21.58	21.52	61.6	64.8	63.9	4.21	4.43	4.37	9.13	9.05	9.07	7	7.50
	10:31		Middle	4	28.90	28.90		8.64	8.64		21.45	21.45		65.2	64.1		4.46	4.38		9.05	9.05		8	
4/7/16	10:30	Fine	Middle	4	28.10	28.10	28.25	8.44	8.44	8.44	23.19	23.19	23.18	68.4	68.2	68.1	4.69	4.67	4.66	8.67	8.69	8.72	6	6.00
	10:32		Middle	4	28.40	28.40		8.44	8.44		23.16	23.16		68.0	67.8		4.65	4.64		8.76	8.77		6	
6/7/16	-	Amber Rainstorm Warning Signal	Middle	-	-	-	-	-	-	-	-	-	-	-	-	-	-	-	-	-	-	-	-	-
	-		Middle	-	-	-		-	-		-	-		-	-		-	-		-	-		-	
8/7/16	14:40	Fine	Middle	4	29.30	29.30	29.30	8.19	8.19	8.21	26.07	26.07	26.02	75.4	74.8	74.2	4.99	4.94	4.91	2.71	2.69	2.74	7	7.50
	14:42		Middle	4	29.30	29.30		8.22	8.22		25.97	25.97		74.3	72.3		4.91	4.78		2.77	2.78		8	
11/7/16	15:45	Fine	Middle	4	28.40	28.40	28.50	8.32	8.32	8.33	27.93	27.93	27.93	94.6	95.0	94.9	6.29	6.31	6.31	2.41	2.43	2.42	12	12.50
	15:47		Middle	4	28.60	28.60		8.34	8.34		27.93	27.93		95.1	94.8		6.32	6.30		2.42	2.40		13	
14/7/16	8:39	Cloudy	Middle	4	26.70	26.70	26.75	8.20	8.20	8.19	26.02	26.02	26.01	76.7	78.3	78.2	5.32	5.41	5.40	2.89	2.81	2.81	8	7.50
	8:40		Middle	4	26.80	26.80		8.17	8.17		26.00	26.00		78.8	78.8		5.44	5.44		2.77	2.78		7	
16/7/16	10:34	Fine	Middle	4	28.70	28.70	28.85	8.27	8.27	8.27	23.34	23.34	23.59	72.7	72.4	72.8	4.92	4.90	4.92	5.16	4.91	4.94	8	8.50
	10:36		Middle	4	29.00	29.00		8.27	8.27		23.34	24.34		72.5	73.5		4.89	4.96		4.79	4.88		9	
18/7/16	11:45	Fine	Middle	4	28.90	28.90	29.00	8.31	8.31	8.31	24.74	24.74	24.73	70.6	69.9	69.3	4.73	4.69	4.65	6.83	6.58	6.68	8	7.50
	11:47		Middle	4	29.10	29.10		8.31	8.31		24.72	24.72		69.5	67.1		4.66	4.50		6.64	6.66		7	
20/7/16	10:19	Fine	Middle	4	27.50	27.50	27.60	8.29	8.29	8.30	27.61	27.61	26.31	64.4	66.8	65.3	4.86	4.52	4.54	4.45	4.34	4.33	5	5.00
	10:21		Middle	4	27.70	27.70		8.30	8.30		27.51	22.51		65.9	64.0		4.46	4.33		4.28	4.24		5	
22/7/16	11:25	Fine	Middle	4	27.00	27.00	27.15	8.35	8.35	8.32	30.45	30.45	30.45	68.7	67.7	68.4	4.61	4.56	4.59	4.72	4.59	4.62	5	5.50
	11:27		Middle	4	27.30	27.30		8.28	8.28		30.44	30.44		68.4	68.9		4.58	4.62		4.58	4.58		6	
25/7/16	15:37	Sunny	Middle	4	27.90	27.90	28.00	8.27	8.27	8.29	31.50	31.50	31.46	78.8	79.4	78.8	5.18	5.22	5.18	4.60	4.63	4.47	7	7.50
	15:39		Middle	4	28.10	28.10		8.31	8.31		31.42	31.42		78.8	78.0		5.18	5.13		4.34	4.29		8	
27/7/16	16:50	Fine	Middle	4	28.20	28.20	28.50	8.25	8.25	8.25	29.47	29.47	29.45	86.8	84.6	85.4	5.78	5.57	5.88	6.78	6.81	6.82	7	7.50
	16:52		Middle	4	28.80	28.80		8.24	8.24		29.42	29.42		84.7	85.3		6.54	5.61		6.83	6.87		8	
29/7/16	8:43	Fine	Middle	4	27.00	27.00	27.05	8.28	8.28	8.28	30.19	30.19	30.23	65.7	66.9	67.0	4.40	4.48	4.49	4.03	4.02	4.02	5	4.50
	8:45		Middle	4	27.10	27.10		8.28	8.28		30.26	30.26		67.9	67.3		4.56	4.52		4.01	4.00		4	



### Graphic Presentation of Water Quality Result of M5B - Central Cooling Water Intake Groups



The construction work during the reporting period include, structural works for tunnel construction, roadworks, drainage works, seawall modification and removal of bulk head wall. The weather condition during the reporting period ranges from mostly sunny to rainy. The quarterly mean of suspended solids in this reporting quarter was found to be 6.5 mg/L which was lower than ambient mean of 7.5 mg/L according to the baseline monitoring data.



### Graphic Presentation of Water Quality Result of Culvert J - Reference Station

